



**ALASKA DIVISION OF HOMELAND SECURITY &  
EMERGENCY MANAGEMENT**



**SITUATION REPORT 21-360 • DECEMBER 27, 2021**

Toll-Free 1.800.478.2337

Anchorage Area 907.428.7000

SEOC 907.428.7100

<p><b><u>SEOC Preparedness Level</u></b> Level 1 – Normal Operations</p>	<p><a href="http://ready.alaska.gov">http://ready.alaska.gov</a></p>	<p><b><u>National Terrorism Advisory System:</u></b> Read the updated NTAS Bulletin <a href="#">here</a></p>
<p><b><u>Maritime Security (MARSEC)</u></b> Level:1-Minimum Appropriate Security Measures</p>	<p><b>WHO Novel Coronavirus Pandemic (COVID-19):</b>  <a href="#">2019 Novel Coronavirus</a></p>	<p><b><u>Alaska Military Installation Force Protection Level:</u></b> FPCON Bravo</p>

(Significant changes from previous situation reports are in red.)

**Significant Issues:**

Over the weekend the SEOC was notified of a roof collapse at the grocery store in Delta Junction as well as other communities in the interior region with possible concerns of building integrity. The SEOC is fully engaged with the community of Delta Junction and continues to gather further details to see what assistance may be needed for Delta Junction and other interior region communities.

**Threat Level Changes:**

None

**State of Alaska Department of Health and Social Services (DHSS)**

DHSS is now leading the State of Alaska COVID-19 Recovery through Department Operations, supported by SEOC and other state departments as required.

For current COVID-19 information, see:

<https://covid19.alaska.gov/>

<https://www.cdc.gov/coronavirus/2019-ncov/index.html>

**NTAS BULLETIN**

To read current or expired advisories, click the link below:

<https://www.dhs.gov/national-terrorism-advisory-system>

**Travel Alerts and Conditions**

For current driving conditions dial 511 or link to <http://511.alaska.gov/>

**Barry Arm Landslide / Tsunami Risk**

For the latest information on the Barry Arm Landslide and Tsunami risk, click here:

[DGGs Barry Arm Landslide and Tsunami Hazard](#)

**Recent Earthquakes**

USGS Earthquake Information: <http://earthquake.usgs.gov/>

National Tsunami Warning Center: <http://tsunami.gov/>

## Alaska Volcanoes

**Davidof** Alert Level: **Advisory** and Aviation Color Code: **Yellow**

**Great Sitkin** Alert Level: **Watch** and Aviation Color Code: **Orange**

**Pavlof** Alert Level: **Watch** and Aviation Color Code: **Orange**

**Semisopchnoi** Alert Level: **Watch** and Aviation Color Code: **Orange**

For Alaska Volcano updates, go to: <https://www.avo.alaska.edu/>

## Air Quality Index (AQI) Advisories

For the most up to date Air Quality Index Advisories:

<http://dec.alaska.gov/Applications/Air/airtoolsweb/Home/Index>

## Spills of Oil and Hazardous Substances

The ADEC Spill Prevention and Response page is located at:

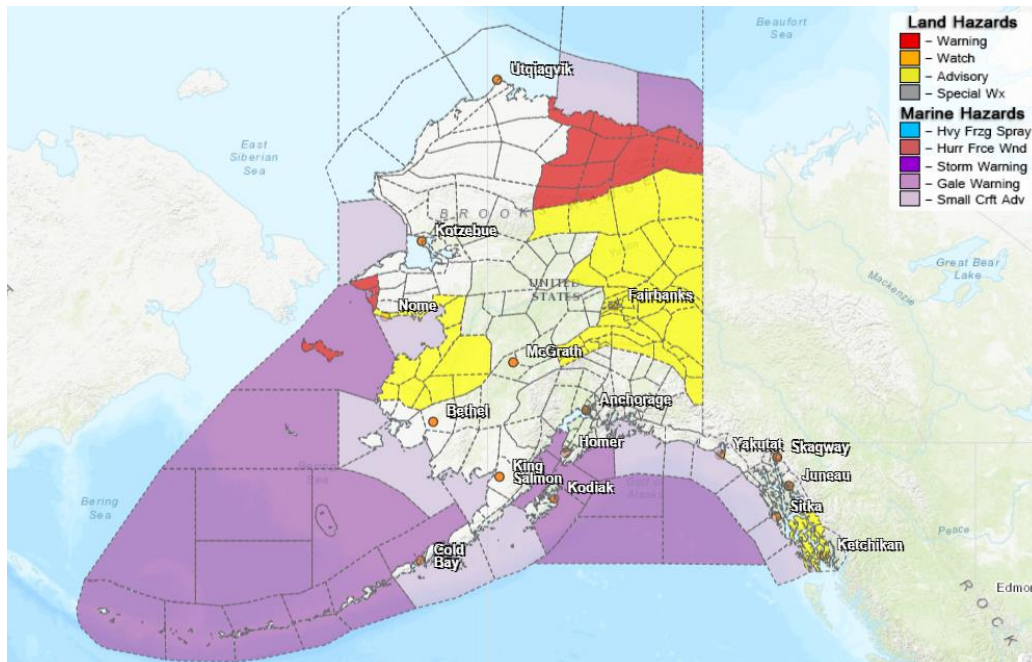
<http://dec.alaska.gov/spar/ppr/spill-information/response/>

## Alaska Cyber Security Information

State Employees may sign up for cyber security notifications and alerts at

<https://oit.alaska.gov/security>

## Significant Weather:



Blizzard Warnings are in effect for the following areas:

- St. Lawrence Island and the Bering Strait Coast until noon Tuesday for snow accumulation of 4 to 6 inches.
- A Blizzard Warning remains in effect for the Eastern Beaufort Sea Coast until midnight tonight. Winds gusting as high as 55 mph will cause whiteout conditions in blowing snow.

Winter Storm Warnings are in effect for the following areas:

- Northeastern Brooks Range until noon today for snow accumulation of 2 to 4 inches and blowing snow causing low visibility.
- Central Beaufort Sea Coast until midnight tonight for snow accumulation of 2 inches and blowing snow causing low visibility.

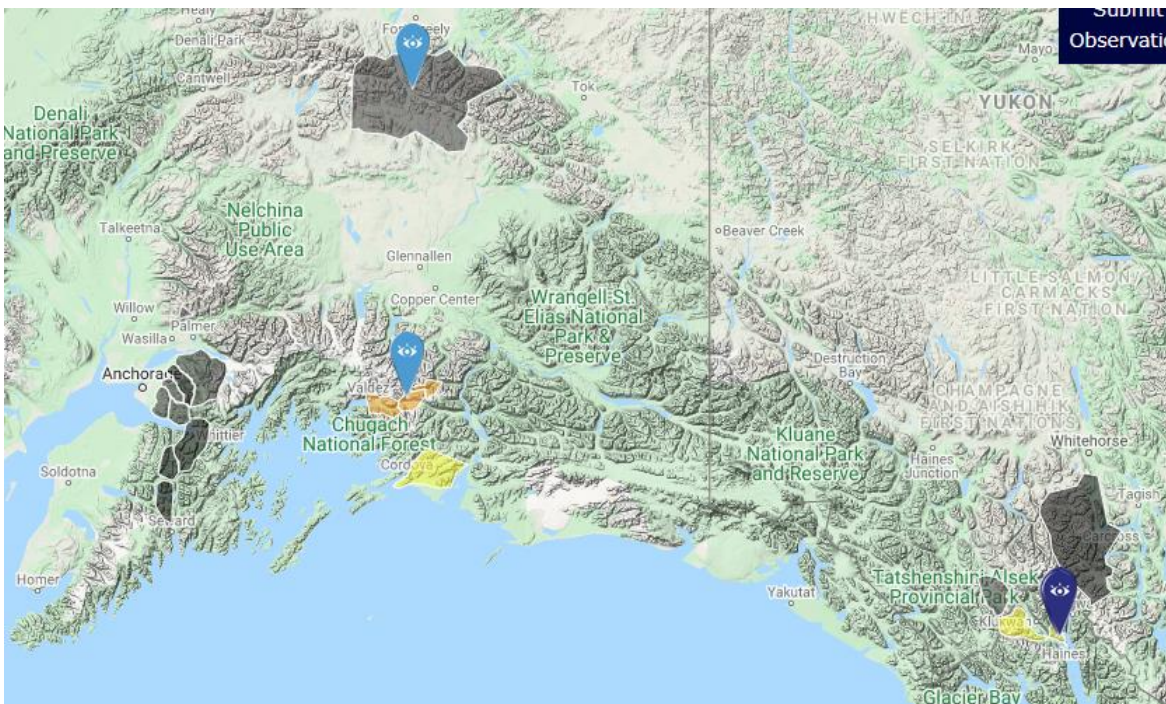
Winter Weather Advisories are in effect for the following areas:

- Southern Seward Peninsula and Coast until 3pm Tuesday. Snow and freezing rain with total snow accumulation of 3 to 5 inches expected.
- Eastern Norton Sound and Nulato Hills until midnight on Tuesday for snow and freezing rain with total snow accumulation of 4 to 6 inches expected.
- Southeastern Brooks Range until noon today for snow accumulation of 1 inch and blowing snow causing low visibility.
- Eastern Alaska Range until noon today for snow accumulation up to two inches as well as freezing rain.
- A Winter Weather Advisory is in effect until noon today for the Central Interior, Denali, the Middle Tanana Valley, Yukon Flats and the Deltana and Tanana Flats. Snow is expected in lower elevations of 1 to 3 inches.

For more information and the most current weather, Watches / Warnings / Advisories go to:

<http://www.weather.gov/arh>

### **Avalanche Forecast:**



There are areas near Valdez, the Richardson Highway and Haines with Considerable risk.

There are areas near Cordova with Moderate Risk.

Check the Avalanche Forecast Center closest to your area for the most up to date information on avalanche potential. <https://alaskasnow.org> or <https://www.weather.gov/afc/avalancheweather>

**The Next Situation Report:** will be **27** December 2021. A significant change in the situation or the threat level will prompt an interim report.

This report is posted on the internet at <https://ready.alaska.gov/sitrep>. To register for email distribution, go to <http://list.state.ak.us/mailman/listinfo/dhsem.situation.report>. Direct questions regarding this report to the SEOC at 907-428-7100 or [seoc@alaska.gov](mailto:seoc@alaska.gov)